



RhoBTB1/2 Polyclonal Antibody

Catalog No	YP-Ab-16245
Isotype	IgG
Reactivity	Human;Mouse
Applications	WB;IHC;IF;ELISA
Gene Name	RHOBTB1/RHOBTB2
Protein Name	Rho-related BTB domain-containing protein 1/2
Immunogen	The antiserum was produced against synthesized peptide derived from human RHBT2. AA range:61-110
Specificity	RhoBTB1/2 Polyclonal Antibody detects endogenous levels of RhoBTB1/2 protein.
Formulation	Liquid in PBS containing 50% glycerol, 0.5% BSA and 0.02% sodium azide.
Source	Polyclonal, Rabbit,IgG
Purification	The antibody was affinity-purified from rabbit antiserum by affinity-chromatography using epitope-specific immunogen.
Dilution	Western Blot: 1/500 - 1/2000. Immunohistochemistry: 1/100 - 1/300. Immunofluorescence: 1/200 - 1/1000. ELISA: 1/5000. Not yet tested in other applications.
Concentration	1 mg/ml
Purity	≥90%
Storage Stability	-20°C/1 year
Synonyms	RHOBTB1; KIAA0740; Rho-related BTB domain-containing protein 1; RHOBTB2; DBC2; KIAA0717; Rho-related BTB domain-containing protein 2; Deleted in breast cancer 2 gene protein; p83
Observed Band	83kD
Cell Pathway	intracellular,cytosol,plasma membrane,
Tissue Specificity	Ubiquitous, with highest levels in skeletal muscle, placenta, testis, stomach, and kidney, followed by uterus and adrenal gland. Expressed in a variety of fetal tissues.
Function	similarity:Belongs to the small GTPase superfamily. Rho family.,similarity:Contains 2 BTB (POZ) domains.,tissue specificity:Ubiquitous, with highest levels in skeletal muscle, placenta, testis, stomach, and kidney, followed by uterus and adrenal gland. Expressed in a variety of fetal tissues.,
Background	The protein encoded by this gene belongs to the Rho family of the small GTPase superfamily. It contains a GTPase domain, a proline-rich region, a tandem of 2 BTB (broad complex, tramtrack, and bric-a-brac) domains, and a conserved C-terminal region. The protein plays a role in small GTPase-mediated signal transduction and the organization of the actin filament system. Alternate splicing



results in multiple transcript variants. [provided by RefSeq, Dec 2008],

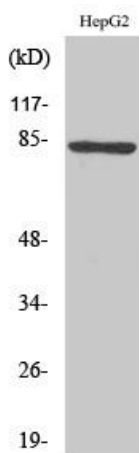
matters needing attention

Avoid repeated freezing and thawing!

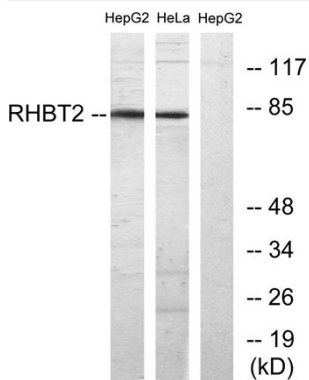
Usage suggestions

This product can be used in immunological reaction related experiments. For more information, please consult technical personnel.

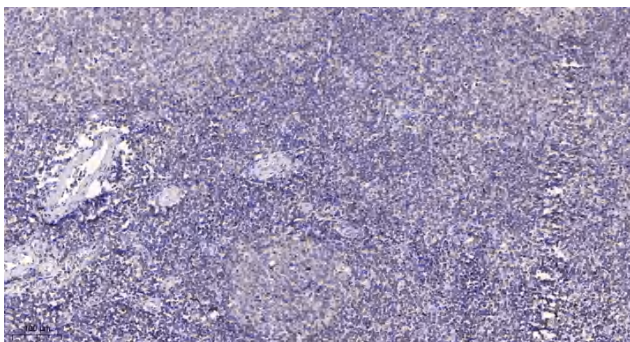
Products Images



Western Blot analysis of various cells using RhoBTB1/2 Polyclonal Antibody



Western blot analysis of lysates from HepG2 and HeLa cells, using RHBT2 Antibody. The lane on the right is blocked with the synthesized peptide.



Immunohistochemical analysis of paraffin-embedded human tonsil. 1, Antibody was diluted at 1:200(4° overnight). 2, Tris-EDTA,pH9.0 was used for antigen retrieval. 3,Secondary antibody was diluted at 1:200(room temperature, 30min).